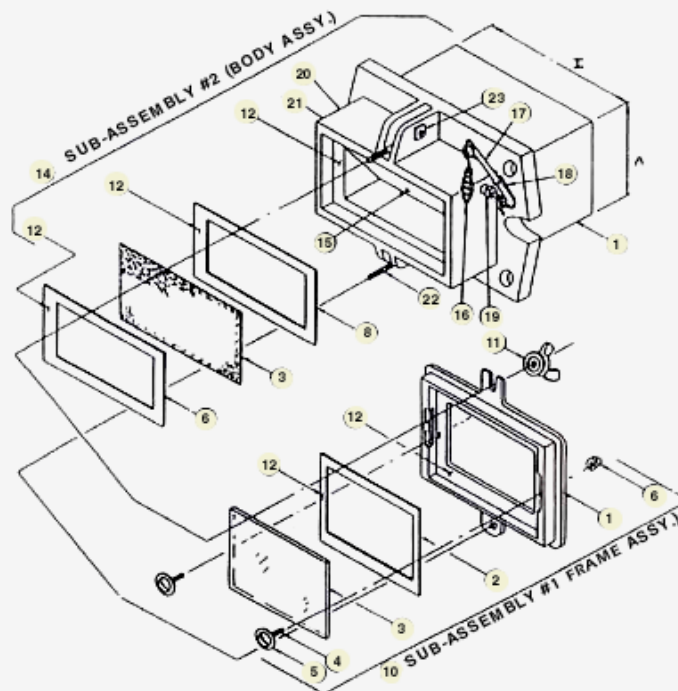




# View Port Maintenance & Installation

Proper installation and maintenance of our units is important to their quality, functionality, and longevity. SAF View Ports units are for use in low-pressure applications (5 PSI) where 100% shutoff is not required. Please find documentation available below for our various products.

## Parts List



- |  |                                     |
|--|-------------------------------------|
| 1. Frame                                       | 13. Mtg. Flange Gasket*             |
| 2. Frame Gasket*                               | 14. Sub-Assembly #2 – Body Assembly |
| 3. Glass*                                      | 15. Shutter                         |
| 4. Truss Head Bolts (2 ea. per unit)           | 16. Wire Drop Handle                |
| 5. Truss Head Gaskets (2 ea. per unit)         | 17. Handle Rod                      |
| 6. Acorn Nuts (2 ea. per unit)                 | 18. Torsion Spring                  |
| 7. Body  | 19. Compression Fitting w. Packing  |
| 8. Body Gasket (2 ea. per unit)*               | 20. Pipe Plug w. Nut                |
| 9. S.S. Screen*                                | 21. Pipe Plug                       |
| 10. Sub-Assembly #1 – Frame Assembly           | 22. Eye Bolts                       |
| 11. Wing Nuts & Metal Washers (2 ea. per unit) | 23. Bolt w. Square Nuts*            |
| 12. Sealant*                                   |                                     |

\* Indicates Recommended Spare Parts

# Sub-Assembly Instructions

## Sub-Assembly #1 - Frame Assembly

1. Apply 1/8" bead of sealant (12) to interior lip of frame (1).
2. Place frame gasket (2) onto sealant (12).
3. Repeat with 1/8" bead of sealant (12).
4. Position glass (3) into place on sealant (12).
5. Position truss head gaskets (5) over holes in the interior of frame (1) and place truss head bolts (4) thru holes.
6. Place acorn nuts (6) over truss head bolts (4) on exterior of frame (1) & tighten with extreme care or glass may break.

## Sub-Assembly #2 - Body Assembly

1. Apply 1/8" bead of sealant (12) to interior lip of body (7).
2. Place gasket (8) onto sealant (12).
3. Repeat with sealant(12).
4. Place screen (9) onto sealant (12).
5. Place gasket (8) onto screen (9).
6. Repeat with sealant (12).
7. Place assembled frame (10) onto sealant (12).
8. Position metal washers & wing nuts (11) in place & tighten.

# View Port Installation Instructions

1. Cut a hole in furnace wall approx. 1/8" larger than the A & I Dimensions.
2. Position studs provided by customer.
3. Place flange gasket (13) to flange on rectangular view port (E Dimension).
4. Insert into furnace wall opening.
5. Securely tighten nuts on studs.
6. See catalog dimension sheet for stud location & furnace wall hole dimensions.

# View Port Maintenance

1. Cleaning or replacing of glass can be done while the equipment is in operation.
2. To clean the interior of the glass, the frame (10) must be removed from the body (14) of the rectangular view port.
3. Once this is done, the rectangular view port is no longer considered pressure-tight.
4. We recommend following the Sub-Assembly Instructions procedure for both #1 and #2 Sub-Assemblies (as shown above) before the equipment is put back in to operation.

